

EYEXO VIEW:

Overhead type, super speed camera-based golf launch monitor.
Fully integrated with QED Refine, Succeed, E6, TCG, Creative Golf.

UNEEKOR

You may have a golf simulator, but are you really using it to **maximize your investment?**

EYEXO Launch Monitor is developed for
your goals and ambition.

Here is why.

ONE

EYE **non-marking ball technology** allows you to play, practice, and train with any ball you choose.

TWO

EYEXO is **all inclusive** for the most accurate **club data** measured in real time.

The core of the non-marking ball technology enhances **reality and accuracy** for indoor golf simulation. With the non-marking ball technology at work, you are many steps closer to a more realistic golf environment.

Whether you'd like to work on hitting longer drives, more accurate iron shots, better putts, or everything together, a precise and speedy launch monitor can help you make it a reality. With precise ball analytics and a full range of club data you can make calculated decisions and educated adjustments for speedy and steady improvement.

EYEXO VIEW Data Output

Ball Data:

- Back Spin
- Side Spin
- Total Spin
- Spin Axis
- Ball Impact on Club Face

*Ball data: Dimple read

Club Data:

- Smash Factor
- Club Speed
- Club Path
- Club Face Angle
- Attack Angle
- Club Loft Angle,
- Club Lie Angle,
- Impact Point Vertical
- Impact Point Horizontal

*Club data: Read with reflective stickers



Total

Carry

Total

Side Total

Smash Factor

Club Speed

Ball Speed

Back Spin

Side Spin

Launch Angle

Side Angle

Descent Angle

Apex

Flight Time



All Session Last one



Apex	72.8 ft
Decent Angle	70.6°
Flight Time	5.9 s
ClubFace Angle	L 1.7°

Edit Data

Carry	Total	Smash Fac.	Club Path	Angles		Speed		Spin		Count
264.7 yard	290.3 yard	1.50	L1.1°	Launch 11.3°	Side L1.5°	Ball 158.8 mph	Club 106.0 mph	Back 1740	Side L756	3/3

THREE

You can be more consistent with the enhanced **Uneekor OPTIX™ technology** on EYEXO.

Enjoy more enhanced Club and Swing OPTIX™ conveniently built in your simulator.

Clubface strike is one of the most important variables in golf consistency. Where on the face you hit the ball affects: launch, spin, spin axis, distance, and club fitting. One way to develop a consistent club face strike is understanding exactly where you hit it. Our Club OPTIX™ allows you to see where you exactly strike the ball on the face and gives you a visual example of adjustments necessary to improve consistency.

Our newest launch monitor model, EYEXO with View software, also features a built-in swing motion analysis quality for yourself or students. It shows premium quality swing motion videos with sophisticated software tools to analyze and communicate on the subject. This feature takes the guess work out of your practice or teaching sessions. It fundamentally leads users to faster improvement and lower scores. The Swing Optix feature comes as an option with the use of premium camera set. SWING OPTIX (\$1,400USD).



Camera Models: HC-CA016-10UC
Lens: Focal Length: 2.5mm
Aperture: 1.2
Resolution: Up to 1440 x 1080
Frame Rate: Up to 160 fps
Shutter: Global Shutter
Connection: USB3.0
Tripod: 1/4' compatible

(2) USB3 Cables (2.7m)
(1) USB3 Repeater Cable (5m)

Total



Front

Side-Top

Group

Club

Swing

Shot

Session



Dynamic Loft

--

Launch Angle

22.5°

Attack Angle

-7.0°

Back Spin

8334

Face Angle

R 2.3°

Side Angle

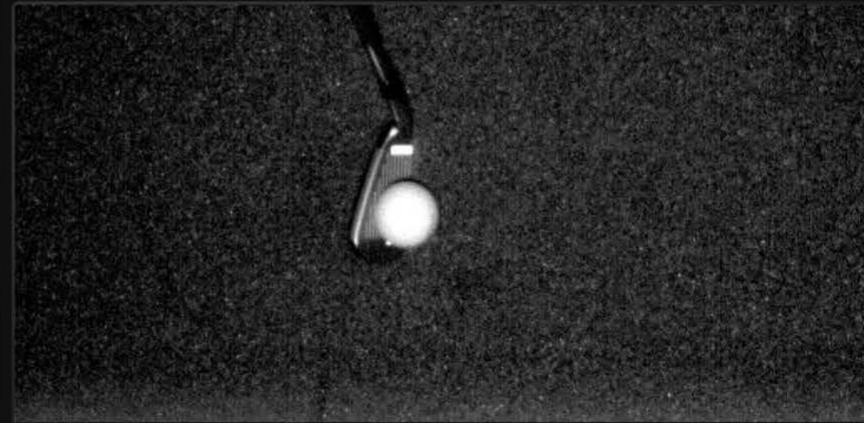
R 2.4°

Club Path

R 3.9°

Side Spin

L 393



Carry	Total	Smash Fac.	Club Path	Angles		Speed		Spin		Count
139.6 yard	143.3 yard	1.25	R3.9°	Launch 22.5°	Side R2.4°	Ball 106.0 mph	Club 84.8 mph	Back 8334	Side L393	2/4

Total



Session

Live

Replay

File



Save



1/1

1/2

1/8



Hide

Delete

Carry

270.3
yard

Total

292.7
yard

Smash Fac.

1.49

Club Path

R0.8°

Angles

Launch
15.3°

Side
R1.2°

Speed

Ball
150.1
mph

Club
100.9
mph

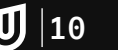
Spin

Back
1808

Side
R77

Count

1/2

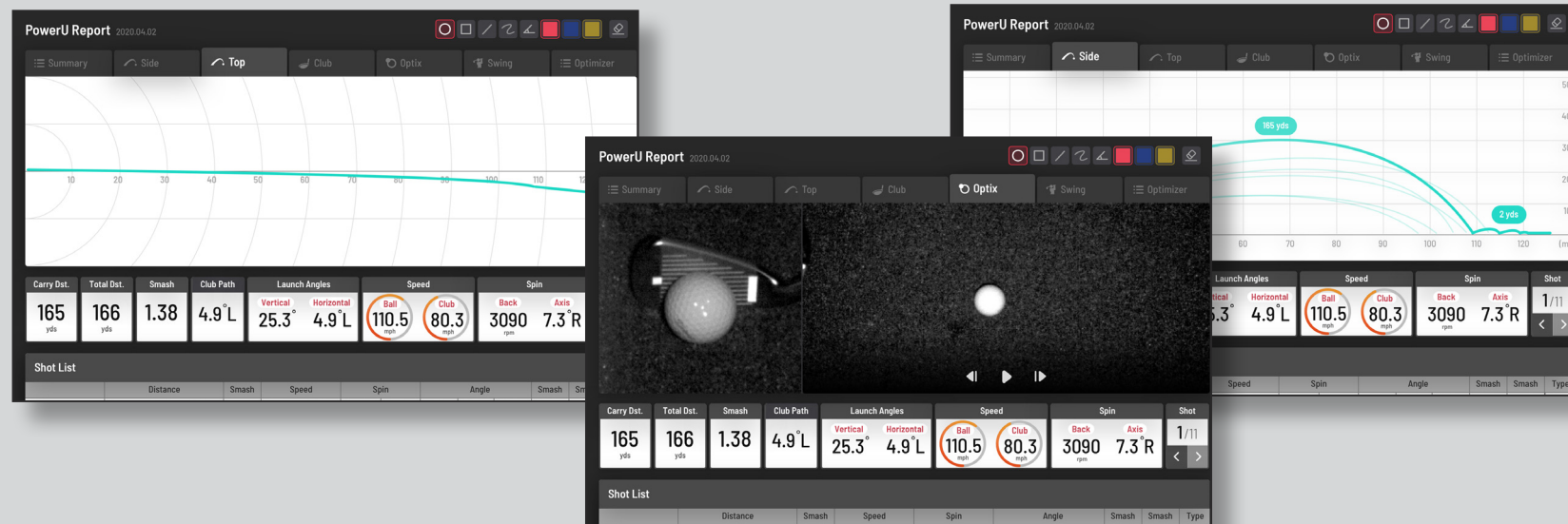


FOUR

Now you can work smarter with **PowerU Cloud** service with EYEXO.

Uneekor is launching an on-line platform, **myUneekor.com**, to give players the ability to collect and connect with all EYEXO customers or students in one place. The EYEXO View software is optimized to function as a golf data base platform that could sort all data by different clubs, users, and sessions.

You can send out the link of **PowerU** report through email and/or social media platforms enhancing your chat functions on-line. Imagine having all these tools at your reach. Less hassle, more time to work on your teaching and dial in club fittings. More cloud service options to be released in Fall 2020.



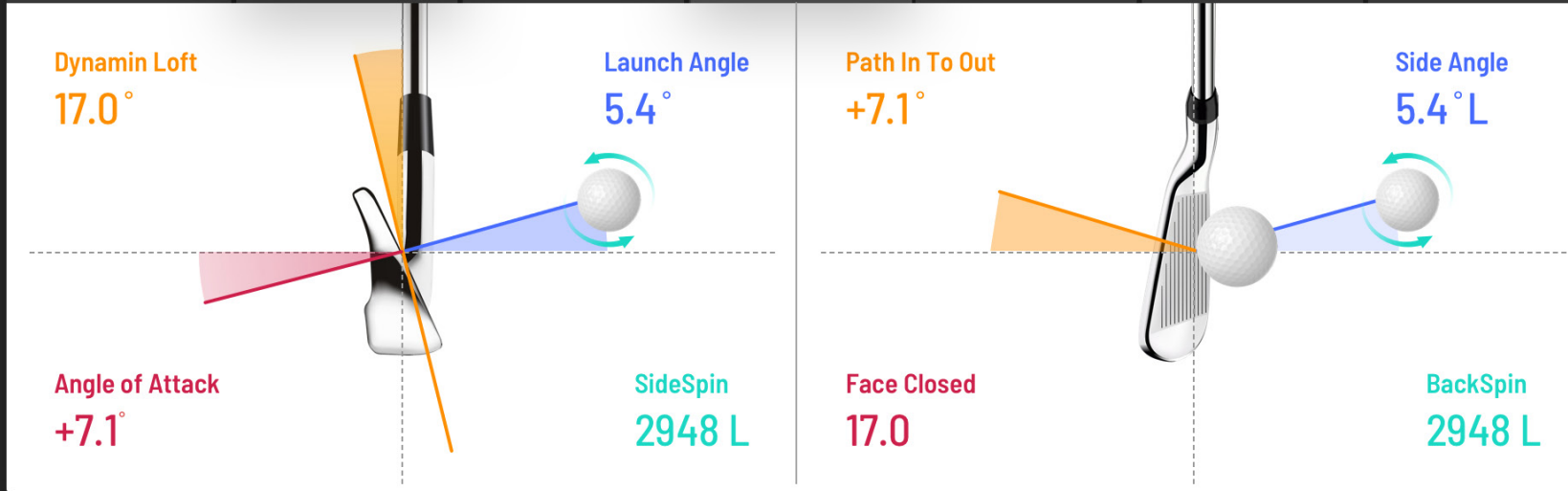


Joe Kim

Joe.kim@gmail.com

Hand: Right Gender: Male

- Summary
- Side
- Top
- Club**
- Optix
- Swing
- Optimizer



Carry Dst.	Total Dst.	Smash	Club Path	Launch Angles		Speed		Spin		Shot
165 yds	166 yds	1.38	4.9° L	Vertical 25.3°	Horizontal 4.9° L	Ball 110.5 mph	Club 80.3 mph	Back 3090 rpm	Axis 7.3° R	1/11

Shot List															
no.	Distance			Smash	Speed		Spin		Angle			Smash	Smash	Type	
	Carry	Total	Side		Club	Ball	(rpm)	Ball	Ball	Ball	Ball				
1	125.0	22.2	R 35.0	R 9.4	R 9.4	-4.3	7.8	7.8	20.1	0.9	25.4	1290	1290	↘	
2	125.0	22.2	R 35.0	R 9.4	R 9.4	-4.3	7.8	7.8	20.1	0.9	25.4	1290	1290	↑	
3	125.0	22.2	R 35.0	R 9.4	R 9.4	-4.3	7.8	7.8	20.1	0.9	25.4	1290	1290	↗	
4	125.0	22.2	R 35.0	R 9.4	R 9.4	-4.3	7.8	7.8	20.1	0.9	25.4	1290	1290	↖	

- Fred Thompson** 2 hours ago
Hey guys, how do you feel about the file?
- Kevin Jung** 2 hours ago
We have sizable data. I think we can make the formatting a little better... use alternating colors maybe?
- David** 2 hours ago
Yeah I was going to say that about the formatting too. Everything else looks good.

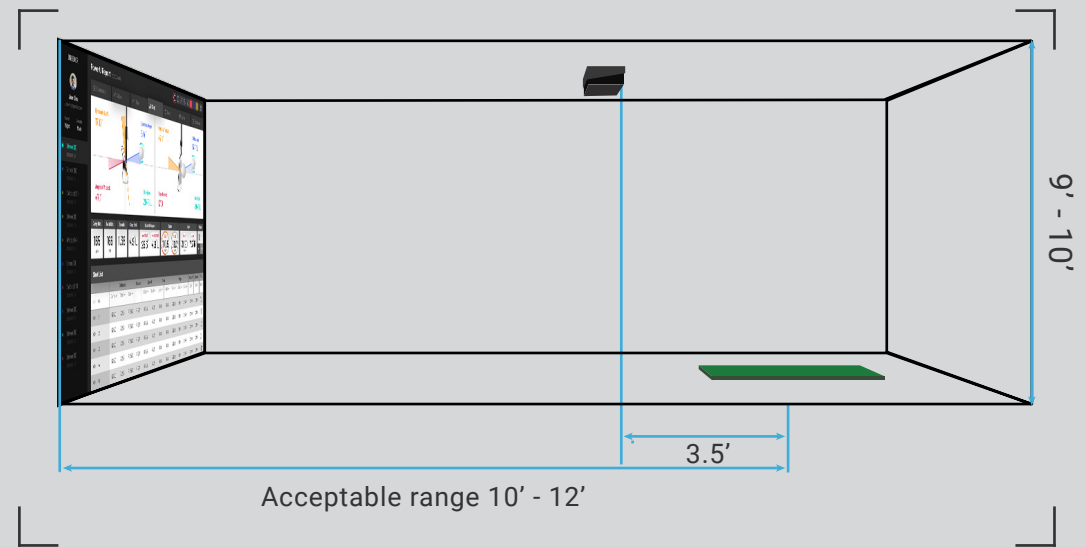
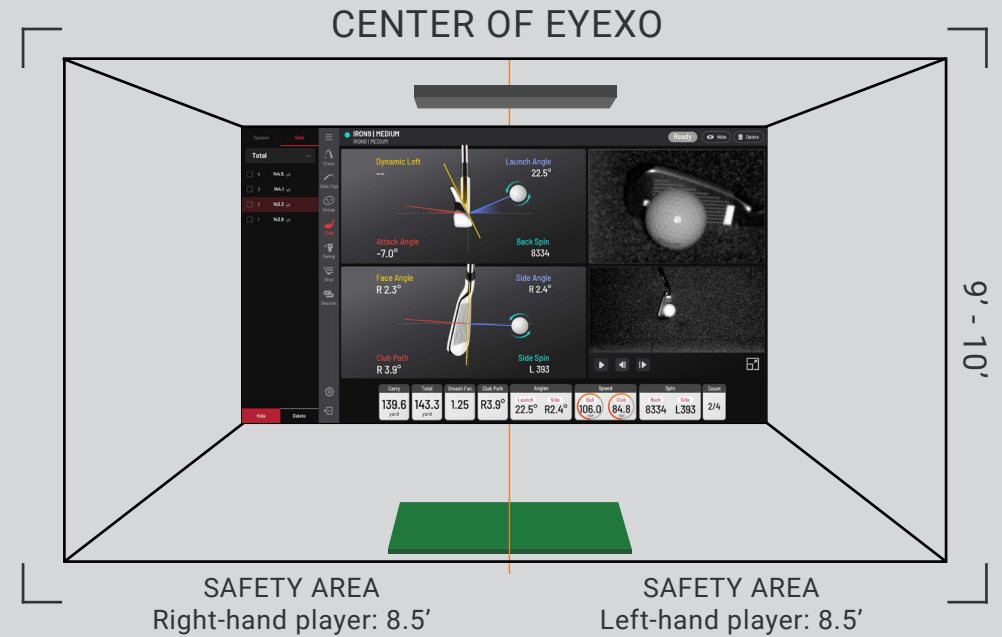
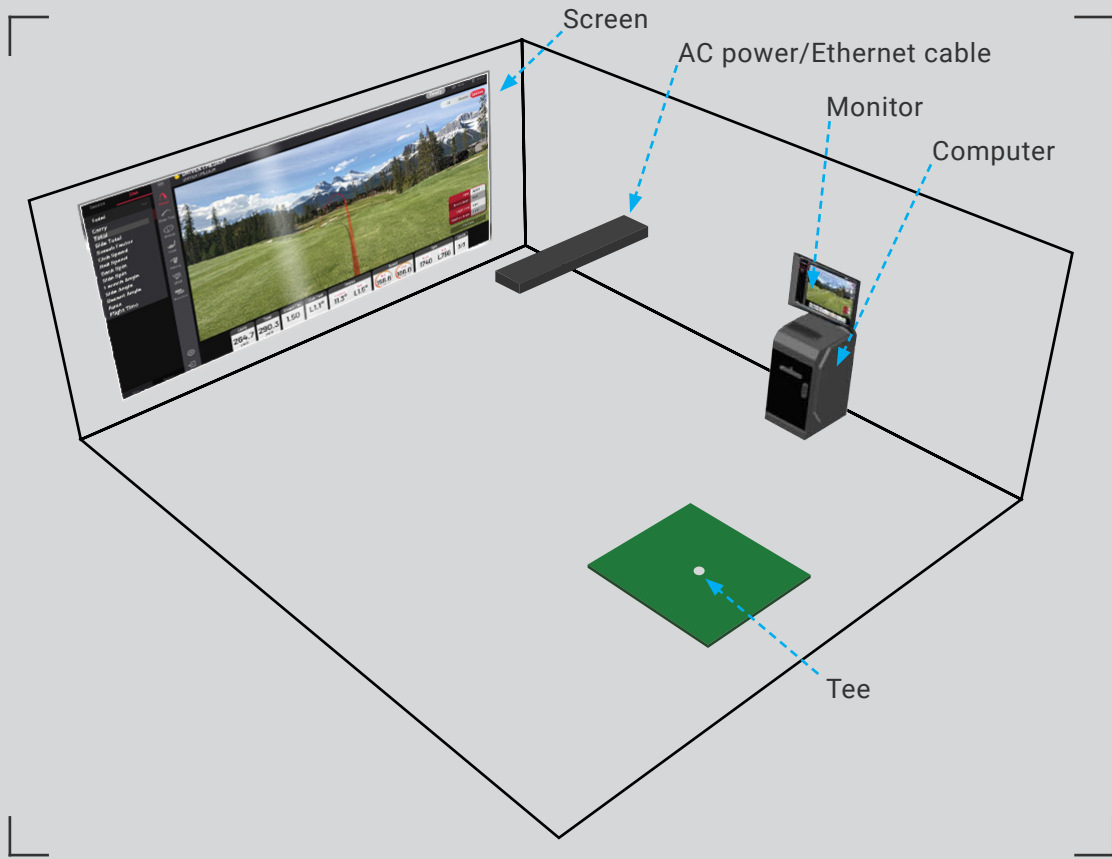
- Driver (8)** 2020.04.08
- 7Iron (10)** 2020.04.08
- 3Wood (21)** 2020.04.08
- Driver (8)** 2020.04.08
- Wedge (4)** 2020.04.08
- 6Iron (8)** 2020.04.08
- 3Wood (11)** 2020.04.08
- Driver (8)** 2020.04.08
- Driver (8)** 2020.04.08
- Driver (8)** 2020.04.08

EYEXO Installation Guide

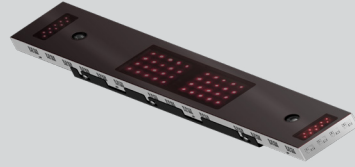
If your indoor sim environment doesn't fit to the ideal set up for EYEXO model as presented in this brochure, please contact our tech support at support@uneekor.com for recommended adjustments to fit your customized installation.

For any other inquires on EYEXO preorder, please contact sales@uneekor.com

EYEXO Installation Setup



Hardware Specification



- 2 Ultra high speed cameras
- 4 Infrared LED array boards
- Gigabit ethernet interface

- Dimensions
79 x 15 x 6.3 cm / 31" x 6" x 2.4" (without bracket)
79 x 15 x 11 cm / 31" x 6" x 4.3" (with bracket)
- Weight
4.7 kg / 10.36 lbs (without bracket)
6.5 kg / 14.33 lbs (with bracket)
- External Input: 110/220V
- Output: 19VDC/120W

PC Requirement

- CPU: Minimum Intel i5 8400 or AMD 3600
- RAM: 8GB or higher
- Graphics: Minimum GeForce GTX 1060 or Radeon RX580
- Operating System: Windows 10 (64bit)
- Resolution: Full HD (1920 x 1080)

Please note that specifications are subject to change without prior notice.

Package Items

- EYEXO Hardware
- Power Cable
- Adapter
- Connector
- USB Ethernet Adapter
- Ethernet Cable
- EYEXO Bracket
- USB-software
- Calibration Chart
- M4 32mm
- M6 15mm
- Reflective stickers
- Special 2-year warranty included

POWER FOR EVERY GOLFER

Uneekor, Inc.

26249 Enterprise Court
Lake Forest, CA 92630

Tel: 1-949-328-7790

sales@uneekor.com

support@uneekor.com